



The Riverside County Children & Families Commission, also known as First 5 Riverside, is a division of the Riverside County Department of Public Social Services. It provides funding for services designed to help children through age 5 develop a strong foundation for success in school and throughout their lives.

Funding, which comes from tobacco taxes, is distributed through a request for proposal process for services consistent with the Commission's strategic plan. In early 2011, the Commission developed a new plan focused on the areas of early care and education, health, and systems change and capacity development. Current contracts that met these goals were extended through the next fiscal year and are included in this brochure.

Funded agencies are reviewed on an ongoing basis to ensure accountability and achievement of results.

The Riverside County Children & Families Commission

COMMISSIONERS:

- County Supervisor Bob Buster
- Susan Loew
- Dr. Steven Morford, Ed. D.
- Debbie Whitaker-Meneses
- Sharon Baskett
- Lupe Ramos Watson
- Judee Cox
- Jay Hoffman, Ed. D.

ALTERNATES:

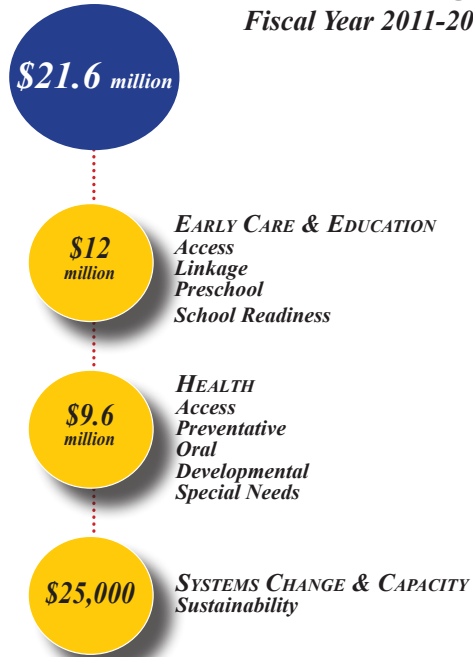
- County Supervisor Marion Ashley
- Sylvia Deporto
- Connie Beasley
- Stanley Grube
- Georgann Koenig
- Kristy Franklin
- Dr. Touraj Shafai, MD
- Deborah Franklin

STAFF:

- Harry Freedman
Executive Director
- Stella M. Smith
Deputy Director

Total First 5 Riverside Program Allocations

Fiscal Year 2011-2012




First 5 Riverside
2002 Iowa Avenue, Ste. 100
Riverside, CA 92507
951-248-0014
FAX: 951-248-0079

FUNDED AGENCIES
FISCAL YEAR 2011-2012

*Investing in partnerships
that benefit children,
from birth through age 5*

Goal Area: Early Care & Education

Increase access, affordability and quality of early care and education services, as well as provide education on promoting optimal early childhood development daily

ABC Child Care Village	\$663,766
Bermuda Dunes Learning Center	\$384,729
Blindness Support Services, Inc.	\$80,188
California Family Life Center	\$58,816
Coachella Valley Unified School District	\$245,735
Escuela De La Raza Unida	\$250,944
Family Service Association	\$1,050,824
Hemet Unified School District	\$679,063
John F. Kennedy Memorial Foundation	\$174,982
Jurupa Unified School District	\$500,000
Lake Elsinore Unified School District	\$85,000
Learning Tree Preschool	\$84,084
Martha's Village and Kitchen	\$290,870
Murrieta Valley School District Preschool For All	\$279,339
New Life Christian Fellowship-Inland Preschool	\$404,055
Nuview Union School District	\$1,691,751
Palm Springs Unified School District	\$340,067
Perris Elementary School District	\$344,546
Riverside County Child Care Consortium	\$115,000
Riverside County Office on Aging - Grandparents Raising Grandchildren	\$447,560
Riverside County Redevelopment Agency	\$739,540
Temecula Valley Unified School District	\$509,741
The Carolyn E. Wylie Center for Children, Youth and Families	\$649,229
Thousand Palms Child Care Center	\$277,916
UCR Comprehensive Approaches to Raising Educational Standards (CARES) Plus for the Early Learning Workforce	\$1,043,479
V.I.P. TOTS	\$395,566
YMCA of Riverside City & County	\$190,000



Total Funding For Early Care & Education

\$11,966,767

Goal Area: Health

Increase access to and appropriate utilization of health and early intervention services, as well as promote optimal health

Borrego Community Health Foundation	\$249,548
Family Service Association	\$1,441,042
First 5 Riverside AmeriCorps	\$82,000
Health Assessment Resource Center (HARC)	\$5,000
Hershey Cause Mental Health Initiative Primary Prevention	\$335,830
Inland Empire Health Plan (IEHP)	\$850,000
Loma Linda University School of Dentistry	\$691,256
Loma Linda University Department of Pediatric Ophthalmology	\$531,485
Mental Health Initiative Primary Prevention	\$335,830
Palo Verde Unified School District	\$207,637
Parkview Community Hospital	\$170,652
Riverside Community Hospital	\$83,227
Riverside County Department of Mental Health	\$2,058,246
Riverside County Department of Public Health	
- Injury Prevention Services	\$175,000
- Loving Support	\$687,488
- Maternal, Adolescent & Family Services	\$838,594
- Nurse Family Partnership	\$331,334
Riverside County Regional Medical Center	\$674,767
San Geronio Memorial Hospital	\$158,991



Total Funding For Health Services

\$9,572,097

Goal Area: Systems Change & Capacity

Emphasis on leveraging other funds, improving program and service sustainability and partnerships for young children

La Sierra University	\$25,000
----------------------	----------

This is a new area developed under the Commission's new strategic plan.

Specific goals and strategies for this investment include:

Integration to ensure that efforts across strategic plan focus areas are coordinated to prevent duplication and maximize resources.

Accountability & Evaluation to measure and communicate the impact of First 5 Riverside investments.

Education to integrate knowledge of early childhood research and best practices within all First 5 Riverside efforts. Among other topics, this includes furthering knowledge of the dangers of tobacco on the health and development of young children.

Partnerships that include coordinated service delivery, early childhood advocacy, sustainability, awareness of services, training and technical assistance and public education

